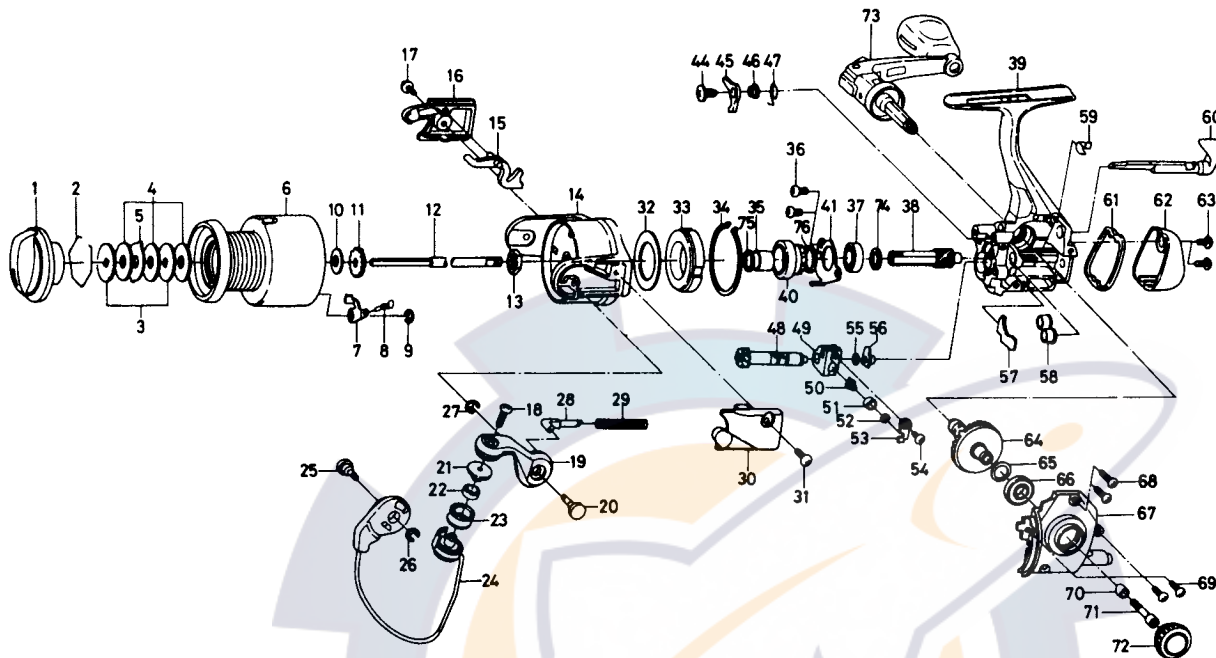


**Daiwa**  
COMMITTED TO TOTAL QUALITY

# SPINNING REEL TD700i/1000i



No. 2-9 F29-6706

Spool assembly

Key NO.	Parts No.	Parts Name	Key NO.	Parts No.	Parts Name
1	F20-4405	Drag knob	41	F15-1102	Bearing retainer
2	171-7701	Drag washer retainer	44	L00-1801	Anti-reverse pawl screw
3	E13-6101	Key washer	45	F15-1501	Anti-reverse pawl
4	E13-6001	Drag washer	46	F15-8301	Anti-reverse pawl collar
5	E13-6201	Eared washer	47	F15-1601	Anti-reverse pawl spring
6	E29-7808	Spool assembly	48	F17-4301	Worm shaft
7	E13-2101	Click pawl	49	F12-2601	Oscillating slider
8	B61-8801	Click spring	50	E12-2403	Oscillating pawl
9	320-5901	Click retainer	51	E12-4601	Oscillating pawl bush
10	E39-4001	Spool washer	52	375-0800	Oscillating pawl washer
11	E36-5301	Click gear	53	E11-6801	Oscillating slider cover
12	F15-8401	Main shaft	54	E15-0203	Oscillating slider cover screw
13	341-9203	Rotor nut	55	375-4101	Worm shaft washer
14	F22-8102	Rotor	56	F05-6901	Worm shaft collar
15	F03-0801	Bail trip lever	57	F08-7201	Shield plate
16	F15-3104	Bail trip cover	58	F15-1701	Pinion collar
17	E36-4201	Bail trip cover screw	59	F15-0701	Anti-reverse cam spring
18	B67-9305	Line roller screw	60	F15-0803	Anti-reverse lever
19	F15-2405	Bail arm	61	F15-3703	Water shield
20	F15-2501	Bail arm screw	62	F15-3803	Rear cover
21	F06-6301	Line roller collar	63	E24-8102	Rear cover screw
22	F05-5601	Ball bearing A	64	E42-0102	Drive gear
23	F05-8901	Line roller	65	375-8500	Drive gear washer
24	F17-4701	Bail assembly	66	637-5701	Ball bearing B
25	F15-2501	Bail trip cam screw	67	F15-2203	Side cover
26	320-5901	Bail trip cam screw retainer	68	E13-0502	Side cover screw A
27	320-5901	Bail arm screw retainer	69	E13-0501	Side cover screw B
28	E36-8201	Bail spring shaft	70	F16-9301	Handle collar
29	E37-2401	Bail spring	71	F30-3701	Handle screw
30	F15-2604	Bail spring cover	72	F15-4402	Handle screw cap
31	E36-4201	Bail spring cover screw	73	F26-4801	Handle assembly
32	F19-7201	Oiled washer	74	F26-3101	Spacer
33	F15-3301	Roller clutch	75	375-8507	Rotor washer
34	F21-2501	Roller clutch retainer	76	F26-8501	Ball bearing collar
35	F15-5101	Spacing sleeve			
36	F21-2201	Bearing retainer screw			
37	637-5701	Ball bearing B			
38	F15-1002	Pinion gear			
39	F26-4701	Body assembly			
40	F15-1201	Anti-reverse ratchet			

### TD1000i SPECIAL PARTS

2-9	F15-8505	Spool assembly
6	F15-8605	Spool assembly
14	F21-6002	Rotor
24	F15-4501	Bail assembly